



Book of Abstracts

11th Wdzydzeanum Conference on
Fluid - Solid Interaction

Wdzydze Kiszewskie, Poland

3th-7th September 2023



Experimental investigation of Euler's elastica: in-situ SEM nanowire post-buckling

Eksperymentalna i teoretyczna ocena stateczności sprężystej nanoprętów

Aleksandra Manecka-Padaż¹, Zdzisław Nowak¹

¹ Institute of Fundamental Technological Research, Polish Academy of Sciences, A. Pawńskiego 5B St., 02-106 Warsaw, amanecka@ippt.pan.pl, znowak@ippt.pan.pl

The Euler Buckling Formula (EBF), which gives the critical value of the compressive load required to buckle a long slender rod, is widely used mainly by structural and mechanical engineers. On the other hand, on the microscopic or nano-scale levels, the non-linear elastic stability processes become a subject of wide interest. The increasing demand for nanomaterials with extraordinary properties, e.g. elastic ones, requires mechanical behaviour description. Based on the nonlinear elasticity theory, this research studied the post-buckling behaviour of simply supported nanowires. Nanowires with various length-to-diameter ratios were examined, and the effect of geometrical parameters was discussed. The results demonstrated that the mid-span deflection increases by increasing the length-to-diameter ratio. Also, it is observed that the displacement of the end of the nanowire is aspect-ratio dependent. It was shown that, in general, Euler's Buckling Formula should apply in predicting the shape of elastica (Fig. 1).

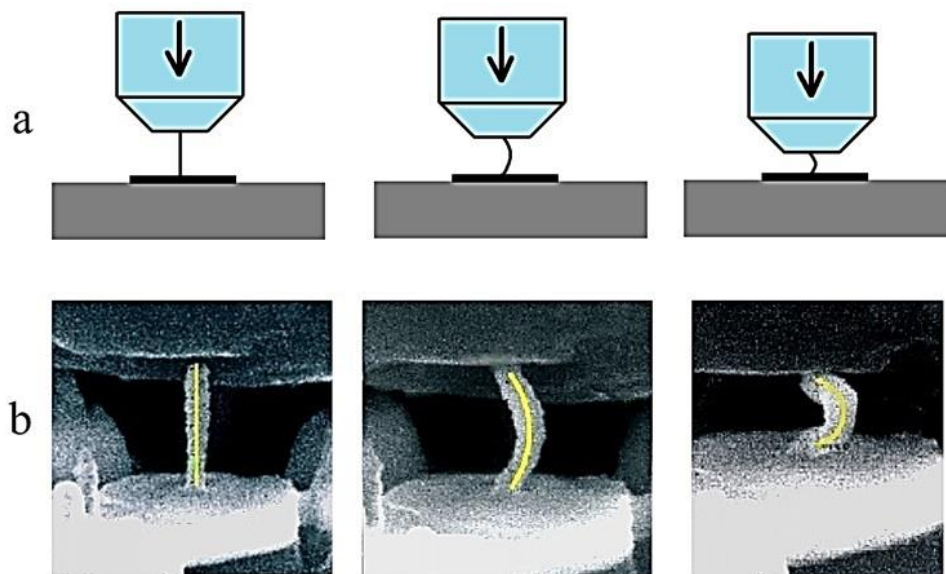


Figure 1. Three buckling stages: a) scheme of compression of a single nanowire with the use of a flat tip nanoindenter b) SEM images with marked predicted deformed elastic lines.

Acknowledgments. The authors acknowledge support and valuable contribution to this work from late Prof. Ryszard B. Peçherski.